

This Massachusetts Family Home Channels Parisian Chic

Designer Nicole Hirsh transformed this '80s-era Colonial with a jaw-dropping second-floor renovation that brings color and French chic to a young family's home.

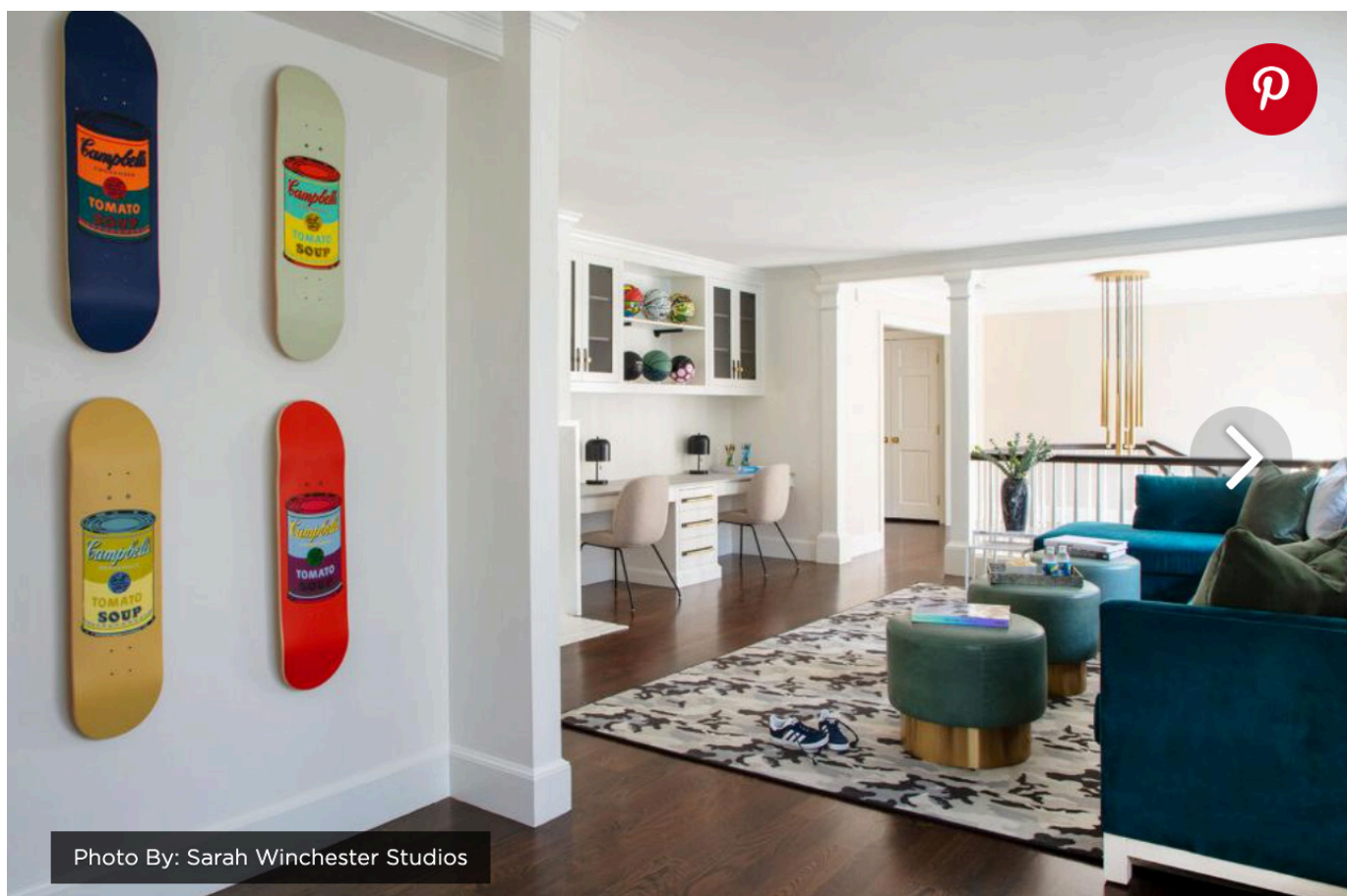


Photo By: Sarah Winchester Studios

This Old-Meets-New Family Retreat Balances Elegance and Confidence

How do you exemplify the *je ne sais quoi* of contemporary Parisian chic in Massachusetts? For starters, you enlist the services of Wellesley-based designer [Nicole Hirsch](#), whose work combines the timeless appeal of classical architecture and bold, fresh applications of color.

That's just what her clients had in mind. "This home belongs to the most wonderful, fun family who have two boys in elementary school. [They're] both very active and love sports," she explains. "It's a 9,000-square-foot Colonial home built in 1987 that has been slowly refurbished since the family moved in. Our work on the home includes the entire second floor and primary suite, including the bedroom, bathroom and closet." By knowing just where and when to apply boldness and restraint, she created a sanctuary that's vibrant and restorative. Here's how she brought it to life.

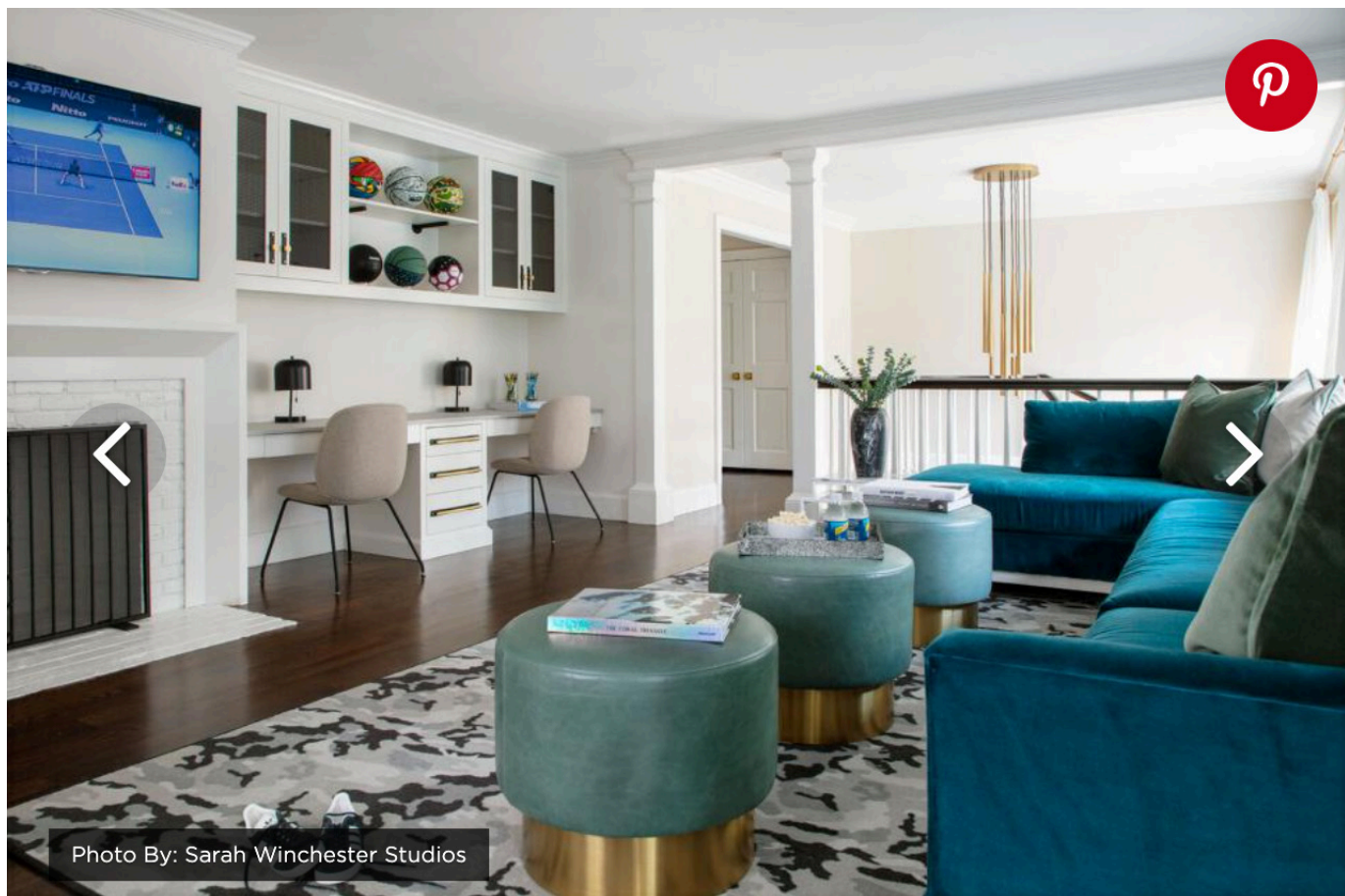


Photo By: Sarah Winchester Studios

Custom-Cut Broadloom Carpet Becomes a Bespoke Area Rug

The anchoring area rug in this space outside the boys' bedrooms is actually broadloom carpet that Hirsch's team had cut down to size — a nifty pro trick. "The [leather ottomans](#) are from [Mitchell Gold](#) and we selected tones of teal and sage green for all the pieces to give it a pop," she explains. "We grounded it all with that amazing camo rug from [Fayette Studio](#)."



Photo By: Sarah Winchester Studios

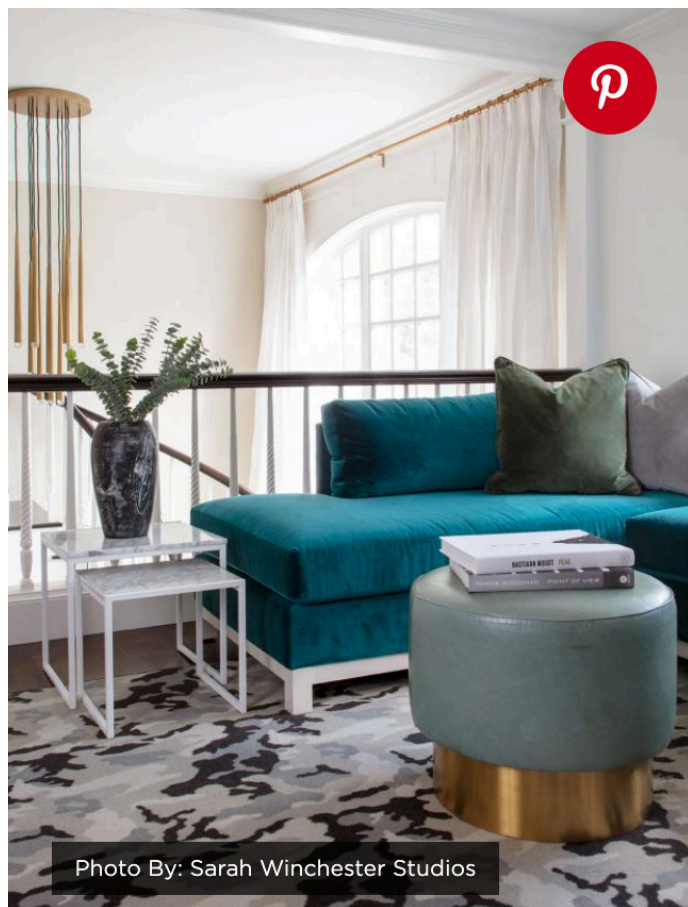


Photo By: Sarah Winchester Studios